



www.FLIGHTSOURCE.com

FLIGHT SOURCE INTERNATIONAL, INC.

Worldwide Aircraft Sales and Acquisitions

sales@flightsource.com

8100 15th St East
Sarasota, FL 34243, USA

Phone: 941.355.9585 / Fax: 941.296.7442

2012 GULFSTREAM G550

Serial Number 5349

Registration N961JF



AIRFRAME

3039 Hours Total Time

1217 Landings

ENGINES: Rolls Royce BR710C4-11

Engine1: Serial Number 15819

3035 Hours Total Time

1215 Total Cycles

Engine 2: Serial Number 15820

3035 Hours Total Time

1215 Total Cycles

AUXILIARY POWER UNIT: Honeywell RE220

4149 Total Cycles

Serial Number: P680



FLIGHT SOURCE INTERNATIONAL, INC.

Worldwide Aircraft Sales and Acquisitions

sales@flightsource.com

8100 15th St East

Sarasota, FL 34243, USA

www.FLIGHTSOURCE.com

Phone: 941.355.9585 / Fax: 941.296.7442



AVIONICS: Enrolled on Honeywell Avionics Protection Plan

Autopilot: Dual Honeywell GP-500

Air Data Computers: Dual Honeywell MC-850

COMM w/SELCAL: Dual Collins HF-9000

DME: Dual Honeywell DM-855

ELT: Artex 110-C406

FMS: Triple Honeywell

HF COM: Dual Collins HF-9000

IRS: Triple Honeywell IR-500 Laseref V

Radar ALT: Dual Honeywell RT-300

TCAS L3 RT-951 w/ Change 7.1

WX Satellite Weather: Dual Honeywell Primus 880

Radar: Honeywell WU-880

ADF: Dual Honeywell DF-855

Cockpit Voice Recorder: L3

EFIS: Quad Honeywell DU-1310

FDR: L3 (88 Parameters)

GPS: Dual Honeywell

HUD

NAVS: Dual Honeywell MRC-885A

RMI: L3 EBDI-4000

VHF COM: Honeywell

Transponder: Dual Honeywell Mode S



FLIGHT SOURCE INTERNATIONAL, INC.

Worldwide Aircraft Sales and Acquisitions

sales@flightsource.com

8100 15th St East

Sarasota, FL 34243, USA

www.FLIGHTSOURCE.com

Phone: 941.355.9585 / Fax: 941.296.7442

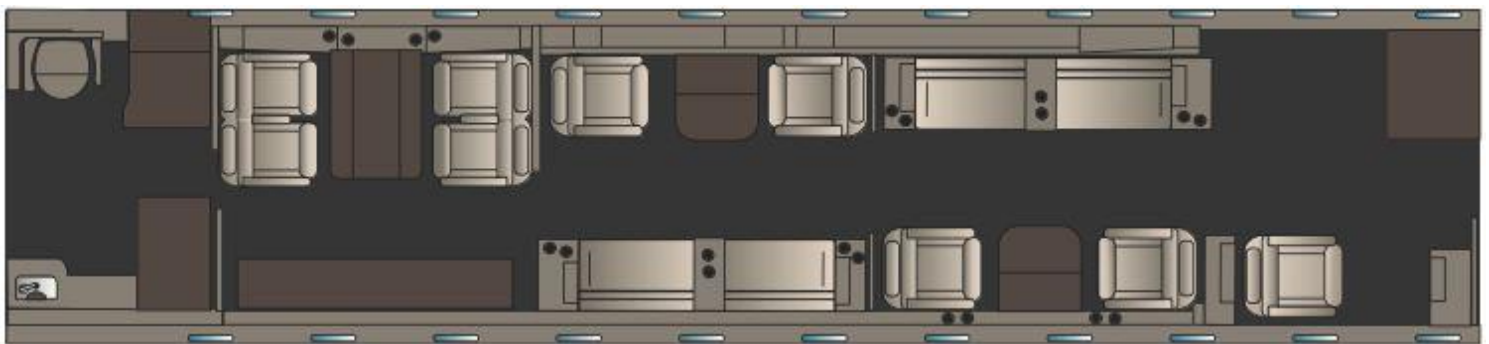
ADDITIONAL:

Fresh 96-Month Inspection at Gulfstream
 ADS-B Out / TCAS 7.1
 Securaplane 500 Security System
 Flight Phone: Aircell Axxess Iridium Satcom

FANS 1/A / CPDLC
 Wi-Fi – Swift Broadband
 CPDLC, FANS 1/A,

Maintenance: Enrolled on Mechanical Protection Plan

Inspection Completed	Interval Time Remaining	Due:
1A 2,995 Hours 500 Hours	441 Hours	3,480 Hours,
2A 2,641 Hours, 1,000 Hours,	587 Hours	3,626 Hours
4A 2,037 Hours 2,000 Hours	961 Hours	4,000 Hours
6A 2,787 Hours 3,000 Hours	2,747 Hours	5,786 Hours
8A N/A 4,000 Hours	961 Hours	4,000 Hours
1C May 2020	12 Month/7 Months	May 2021
2C May 2020	24 Month/15 Months	May 2022
3C February 2018	36 Month/4 Months	Feb 2021
4C May 2020	48 Month/4 Months	March 2024
6C March 2018	72 Month/38 Months	March 2024
8C October 2020	96 Month/96 Months	May 2028
144 Month May 2012	144 Month 38 Months	May 2024
192 Month May 2012	192 Month 87 Months	May 2028
5000 Landing N/A	5,000 Landing 3,783 Landings	5,000 Landing



INTERIOR

16 Seats Galley Location Aft Forward Cabin Configuration with Forward Crew Rest Seat, Forward and Aft Facing Executive Seats, Four Place Right Side Facing Divan Aft Cabin Configuration, Cabin Switch Panels, Forward and Aft Facing Executive Seats, Four Place Left Side Facing Divan, Four Place Conference with Aft Credenza Lavatories, Forward & Aft Additional Galley Equipment High-Temperature Oven, Galley Touch Screen Monitor, Coffee Maker, Entertainment Airshow - Airshow 4000, Media Player - Aux Audio/Video Panels, Audio - iPod Jack

This aircraft is being brokered by Flight Source International, Inc. Flight Source International, Inc. has not conducted a pre-purchase inspection of this aircraft to verify mechanical condition, airworthiness or accuracy of specifications. Prospective purchasers are encouraged to conduct their own independent pre-purchase inspection as Flight Source International, Inc. makes no representations as to the airworthiness of the aircraft or the accuracy of the above information. Specifications Subject To Verification Upon Inspection. Aircraft Subject To Prior Sale



FLIGHT SOURCE INTERNATIONAL, INC.

Worldwide Aircraft Sales and Acquisitions

sales@flightsource.com

8100 15th St East

Sarasota, FL 34243, USA

www.FLIGHTSOURCE.com

Phone: 941.355.9585 / Fax: 941.296.7442

Panels, Extensive Storage Carpet Dark Grey Tone with Floral Print Woodwork High Gloss Dark Wood Soft Goods Neutral Color Seating Last Interior. New February 2020 by Westar

EXTERIOR

Overall Matterhorn White With Sky Blue and Neptune Blue Accent Stripes. New February 2020 by Westar



AVAILABLE IMMEDIATELY, MAKE OFFER, CONTACT MARIA +1 941-586-2054 or ERIC +1 941-586-6345



FLIGHT SOURCE INTERNATIONAL, INC.

Worldwide Aircraft Sales and Acquisitions

sales@flightsource.com

8100 15th St East
Sarasota, FL 34243, USA

www.FLIGHTSOURCE.com

Phone: 941.355.9585 / Fax: 941.296.7442



Back Table Interior

This aircraft is being brokered by Flight Source International, Inc. Flight Source International, Inc. has not conducted a pre-purchase inspection of this aircraft to verify mechanical condition, airworthiness or accuracy of specifications. Prospective purchasers are encouraged to conduct their own independent pre-purchase inspection as Flight Source International, Inc. makes no representations as to the airworthiness of the aircraft or the accuracy of the above information. Specifications Subject To Verification Upon Inspection. Aircraft Subject To Prior Sale



FLIGHT SOURCE INTERNATIONAL, INC.

Worldwide Aircraft Sales and Acquisitions

sales@flightsource.com

8100 15th St East

Sarasota, FL 34243, USA

www.FLIGHTSOURCE.com

Phone: 941.355.9585 / Fax: 941.296.7442



Day Time Interior Seats

This aircraft is being brokered by Flight Source International, Inc. Flight Source International, Inc. has not conducted a pre-purchase inspection of this aircraft to verify mechanical condition, airworthiness or accuracy of specifications. Prospective purchasers are encouraged to conduct their own independent pre-purchase inspection as Flight Source International, Inc. makes no representations as to the airworthiness of the aircraft or the accuracy of the above information. Specifications Subject To Verification Upon Inspection. Aircraft Subject To Prior Sale



FLIGHT SOURCE INTERNATIONAL, INC.

Worldwide Aircraft Sales and Acquisitions

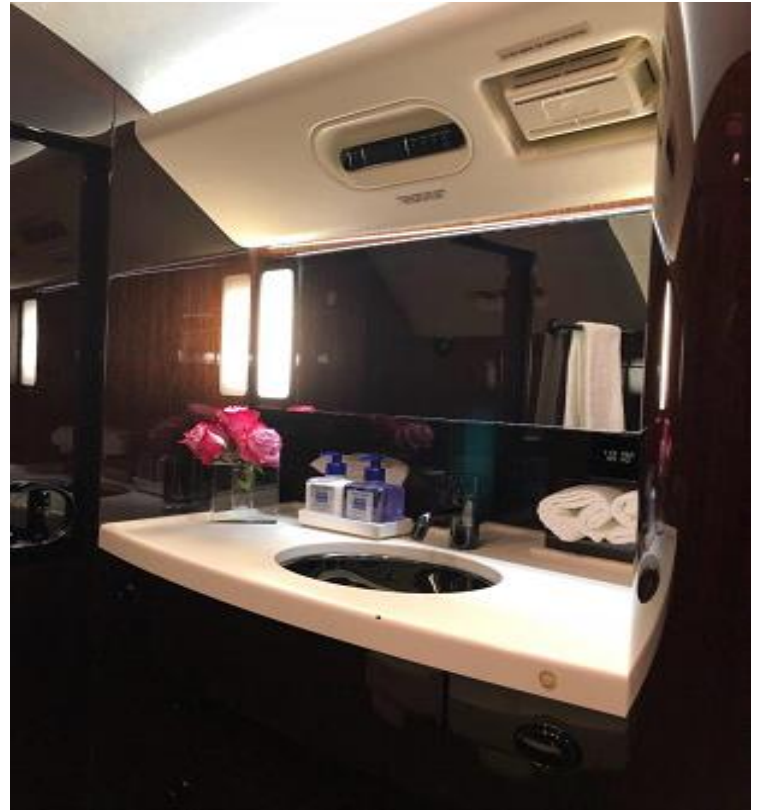
sales@flightsource.com

8100 15th St East

Sarasota, FL 34243, USA

www.FLIGHTSOURCE.com

Phone: 941.355.9585 / Fax: 941.296.7442



This aircraft is being brokered by Flight Source International, Inc. Flight Source International, Inc. has not conducted a pre-purchase inspection of this aircraft to verify mechanical condition, airworthiness or accuracy of specifications. Prospective purchasers are encouraged to conduct their own independent pre-purchase inspection as Flight Source International, Inc. makes no representations as to the airworthiness of the aircraft or the accuracy of the above information. Specifications Subject To Verification Upon Inspection. Aircraft Subject To Prior Sale